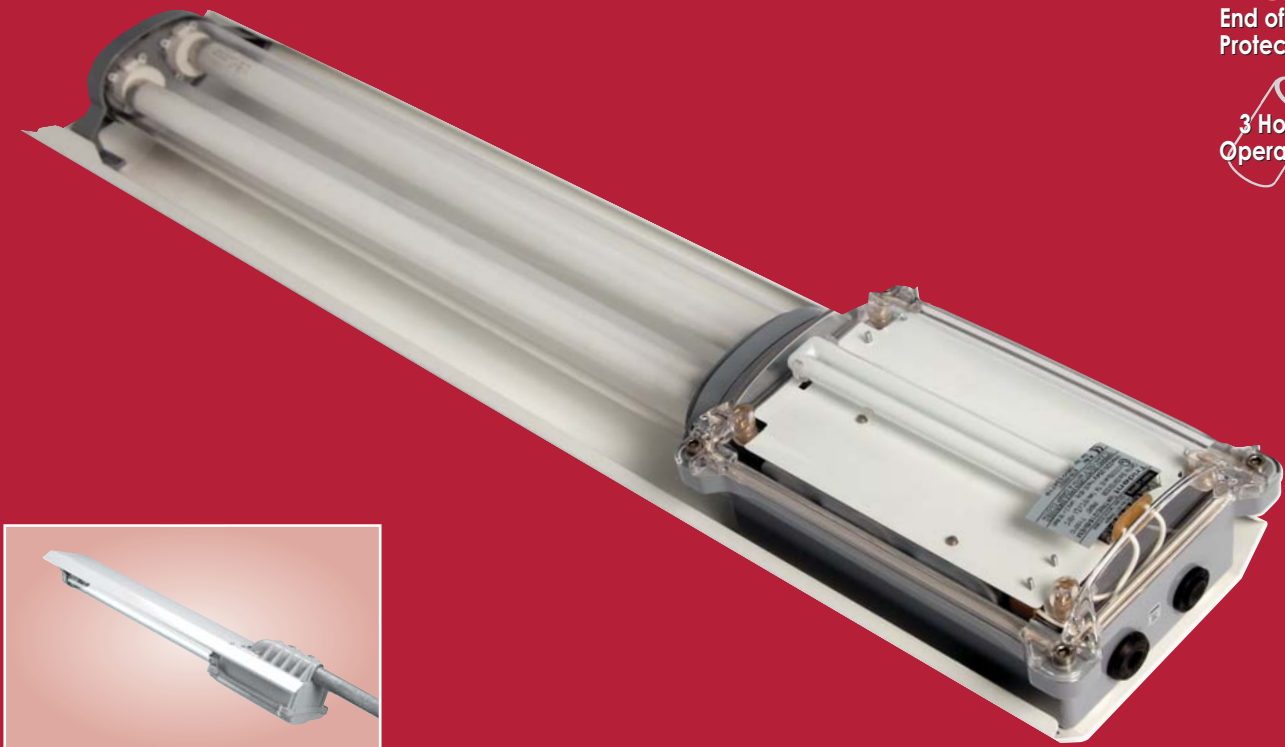


# TRIDENT VL126

End of Life  
Protection

3 Hour  
Operation




Spigot entry version

## FEATURES AND BENEFITS

Dedicated emergency lamp with battery backup • Proven ingress protection • Over voltage and harmonic distortion protection

## CERTIFICATION & APPROVALS

**IECEX** Certificate IECEX SIR 03.0004  
**ATEX** Certificate SIRA03ATEX3206

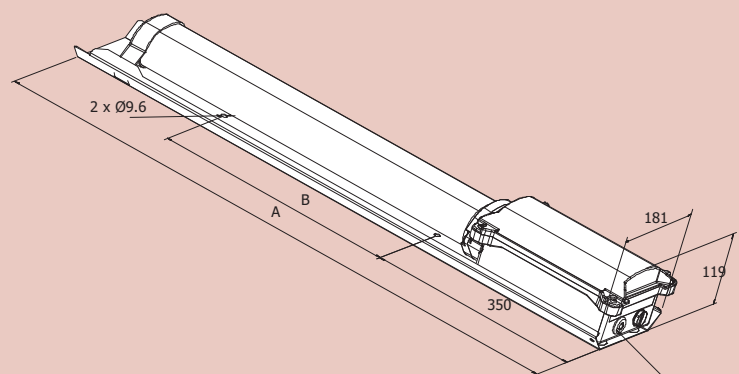
2 x 18W and 2 x 36W Varients  
 II 2 GD Ex em IIC T4 -15°C to +55°C

2 x 58W Variant  
 II 2 GD Ex em IIC T4 -15°C to +50°C

Ingress protection to IP66, IP67  
IP68 (on application)

**GOST-R** Approved  
**TIS** Approved  
**GB (China)** Approved

## DIMENSIONS



2 x 20mm Dia. holes for cable entry, supplied with 1 Ex e blanking plug & 1 traveling plug.

Fixing centres suitable for M8 bolts

Fitting wattage	Overall length Dim A	Fixing centres Dim B
2x18W	995	400
2x36W	1605	700
2x58W	1905	700

Dimensions in millimetres

## TECHNICAL SPECIFICATION

### LAMP TYPES

T8, Ø26mm, G13 cap bi-pin fluorescent.  
Available in the following configurations: 2 x 18W,  
2 x 36W, 2 x 58W

### POWER SUPPLY

220V-254V, 50/60Hz AC/DC (2 x 18W, 2 x 36W and 2 x 58W)  
110V-130V, 50/60Hz AC/DC (2 x 18W and 2 x 36W)

### POWER FACTOR

Better than 0.95.

### EMERGENCY OPERATION

11W lamp emergency light output is 47%.  
Duration is typically 3 hours.

### BATTERY

5 cell - 4Ah, 6V internal Ni-Cad.

### TERMINALS

4 core up to 4 mm<sup>2</sup> conductors with looping. Through wiring is available as an option.

Terminals for live constant, live switched, neutral & earth are provided. External earth terminal is an option.

### CABLE ENTRIES

Two x 20mm clearance holes supplied with 1 x transit plug and 1 x Ex blanking plug.

Cable entry devices (ie. glands) must maintain the IP rating for the luminaire.

### TEMPERATURE CLASSIFICATION

Gas environments: T4.  
Dust environments: T100°C.

### AMBIENT TEMPERATURE RANGE

-15°C to +55°C (18W & 36W versions)  
-15°C to +50°C (58W version)

### MATERIALS

Enclosure	Polycarbonate moulding.
Lamp Envelope	Polycarbonate.
Reflector	Epoxy powder coated stainless steel.
Gasket	Silicone
External Fasteners	Stainless steel.

### WEIGHT

Variant	2x18W Lamps	2x36W Lamps	2x58W Lamps
Standard	5.4Kg	7.0Kg	7.8Kg
Through-Wired	6.0Kg	7.6Kg	8.4Kg
Pole-Mount	5.7Kg	7.3Kg	8.1Kg

### SUSPENSION

Standard mounting is direct to the external reflector.

Optional ceiling, wall, pole mounting brackets, and eye bolts are available on request.

Direct spigot mounting option for up to 42mm diameter is available for the 18W and 36W versions.

## ORDERING REFERENCE

Std. Cat Ref.	Wattage	Lamp Type
TRIE/218/BI/EM	2x18W	Bi-Pin
TRIE/236/BI/EM	2x36W	Bi-Pin
TRIE/258/BI/EM	2x58W	Bi-Pin

An 11W compact fluorescent emergency lamp is factory fitted

## OPTIONS - SUFFIX TO CATALOGUE REF.

/120	Specific voltage (110/130V) - 18W/36W only
/25	25mm Entries
/T	Through wiring
/SC	Screwed connection terminal block (6mm <sup>2</sup> conductors)
/M20	M20 Threaded entry pad c/w earth lead to T/Block
/M25	M25 Threaded entry pad c/w earth lead to T/Block
/SE	Spigot entry version (18W & 36W)
/BCM	Battery control management system
/ZR	Powder coated zintec reflector
/IEC	Supplied with IECEx certification label

## ACCESSORIES

Pole mount bracket (38-42mm)  
SPOL4-100004

Pole mount bracket (48-52mm)  
SPOL4-100005

Pole mount bracket (58-62mm)  
SPOL4-100006

Ceiling mount bracket assembly  
SEXCE-00001

M8 eye bolt  
SEXCE-00008

Wall bracket  
SEXCE-00009

Wall mounting outreach bracket  
(for use with /SE version)  
NPRO4-0007

Wall mounting outreach bracket  
(for use with standard 18W version)  
NPRO4-0008

Wall mounting outreach bracket  
(for use with standard 36W version)  
NPRO4-0012