



CONTACTOR, AC-3 37 KW/400 V,  
AC 110V 50HZ/120V 60HZ 3-POLE, SIZE S3,  
SCREW CONNECTION

### General technical data:

<b>product brand name</b>		SIRIUS
<b>Size of the contactor</b>		S3
<b>Protection class IP / on the front</b>		IP20
<b>Degree of pollution</b>		3
<b>Installation altitude / at a height over sea level / maximum</b>	m	2,000
<b>Ambient temperature / during operating</b>	°C	-25 ... +60
<b>Mechanical operating cycles as operating time</b>		
<ul style="list-style-type: none"> <li>• of the contactor / typical</li> </ul>		10,000,000
<ul style="list-style-type: none"> <li>• of the contactor with added auxiliary switch block / typical</li> </ul>		10,000,000
<ul style="list-style-type: none"> <li>• of the contactor with added electronics-compatible auxiliary switch block / typical</li> </ul>		5,000,000

### Main circuit:

<b>Number of NC contacts / for main contacts</b>		0
<b>Number of NO contacts / for main contacts</b>		3
<b>Operating current</b>		
<ul style="list-style-type: none"> <li>• at AC-1 / at 400 V <ul style="list-style-type: none"> <li>• at 40 °C ambient temperature / rated value</li> </ul> </li> </ul>	A	120
<ul style="list-style-type: none"> <li>• at 60 °C ambient temperature / rated value</li> </ul>	A	100
<ul style="list-style-type: none"> <li>• at AC-3 / at 400 V / rated value</li> </ul>	A	80

• at AC-4 / at 400 V / rated value	A	66
• with 1 current path / at DC-1		
• at 24 V / rated value	A	100
• at 110 V / rated value	A	9
• with 2 current paths in series / at DC-1		
• at 24 V / rated value	A	100
• at 110 V / rated value	A	100
• with 3 current paths in series / at DC-1		
• at 24 V / rated value	A	100
• at 110 V / rated value	A	100
• with 1 current path / at DC-3 / at DC-5		
• at 24 V / rated value	A	40
• at 110 V / rated value	A	2.5
• with 2 current paths in series / at DC-3 / at DC-5		
• at 24 V / rated value	A	100
• at 110 V / rated value	A	100
• with 3 current paths in series / at DC-3 / at DC-5		
• at 24 V / rated value	A	100
• at 110 V / rated value	A	100
<b>Service power</b>		
• at AC-2 / at 400 V / rated value	kW	37
• at AC-3 / at 400 V / rated value	kW	37
• at AC-4 / at 400 V / rated value	W	37,000
<b>Active power loss / per conductor / typical</b>	W	7.7

<b>Control circuit:</b>		
<b>Type of voltage / of the controlled supply voltage</b>		AC
<b>Control supply voltage / 1</b>		
• at 50 Hz / for AC		
• rated value	V	110
• at 60 Hz / for AC		
• rated value	V	120
<b>Operating range factor control supply voltage rated value / of the magnet coil</b>		
• at 50 Hz		
• for AC		0.8 ... 1.1
• at 60 Hz		
• for AC		0.8 ... 1.1
<b>Apparent pull-in power / of the solenoid / for AC</b>	V·A	300
<b>Apparent holding power / of the solenoid / for AC</b>	V·A	21

Inductive power factor / with the pull-in power of the coil		0.52
Inductive power factor / with the pull-in power of the coil		0.29

#### Auxiliary circuit:

Contact reliability / of the auxiliary contacts		1 faulty switching per 100 million (17 V, 1 mA)
Number of NC contacts / for auxiliary contacts / instantaneous switching		0
Number of NO contacts / for auxiliary contacts / instantaneous switching		0
Operating current / of the auxiliary contacts		
<ul style="list-style-type: none"> <li>• at AC-12 / maximum</li> </ul>	A	10
<ul style="list-style-type: none"> <li>• at AC-15</li> </ul>		
<ul style="list-style-type: none"> <li>• at 230 V</li> </ul>	A	6
<ul style="list-style-type: none"> <li>• at 400 V</li> </ul>	A	3
<ul style="list-style-type: none"> <li>• at DC-12</li> </ul>		
<ul style="list-style-type: none"> <li>• at 60 V</li> </ul>	A	6
<ul style="list-style-type: none"> <li>• at 110 V</li> </ul>	A	3
<ul style="list-style-type: none"> <li>• at 220 V</li> </ul>	A	1
<ul style="list-style-type: none"> <li>• at DC-13</li> </ul>		
<ul style="list-style-type: none"> <li>• at 24 V</li> </ul>	A	10
<ul style="list-style-type: none"> <li>• at 60 V</li> </ul>	A	2
<ul style="list-style-type: none"> <li>• at 110 V</li> </ul>	A	1
<ul style="list-style-type: none"> <li>• at 220 V</li> </ul>	A	0.3

#### Short-circuit:

Design of the fuse link		
<ul style="list-style-type: none"> <li>• for short-circuit protection of the auxiliary switch / required</li> </ul>		fuse gL/gG: 10 A
<ul style="list-style-type: none"> <li>• for short-circuit protection of the main circuit</li> </ul>		
<ul style="list-style-type: none"> <li>• with type of assignment 1 / required</li> </ul>		fuse gL/gG: 250 A
<ul style="list-style-type: none"> <li>• at type of coordination 2 / required</li> </ul>		fuse gL/gG: 160 A

#### Installation/mounting/dimensions:

Type of mounting		screw and snap-on mounting onto 35 mm and 75 mm standard mounting rail
series installation		Yes
Width	mm	70
Height	mm	146
Depth	mm	139
Distance, to be maintained, to earthed part / sideways	mm	6

#### Connection type:

Design of the electrical connection		
-------------------------------------	--	--

<ul style="list-style-type: none"> <li>• for main current circuit</li> <li>• for auxiliary and control current circuit</li> </ul>	<p>screw-type terminals</p> <p>screw-type terminals</p>
<b>Type of the connectable conductor cross-section</b> <ul style="list-style-type: none"> <li>• for main contacts <ul style="list-style-type: none"> <li>• solid</li> </ul> </li> <li>• for auxiliary contacts <ul style="list-style-type: none"> <li>• finely stranded <ul style="list-style-type: none"> <li>• with conductor end processing</li> </ul> </li> </ul> </li> <li>• for AWG conductors / for auxiliary contacts</li> </ul>	<p>2x (2.5 ... 16 mm<sup>2</sup>)</p> <p>2x (0.5 ... 1.5 mm<sup>2</sup>), 2x (0.75 ... 2.5 mm<sup>2</sup>)</p> <p>2x (20 ... 16), 2x (18 ... 14), 1x 12</p>

**Certificates/approvals:**

<b>General Product Approval</b>	<b>Functional Safety / Safety of Machinery</b>	<b>Declaration of Conformity</b>
---------------------------------	--	----------------------------------



[Type Examination](#)



**Test Certificates**

[Special Test Certificate](#)

**Shipping Approval**



**other**

[Confirmation](#)

[other](#)



**Further information:**

**Information- and Downloadcenter (Catalogs, Brochures,...)**

<http://www.siemens.com/industrial-controls/catalogs>

**Industry Mall (Online ordering system)**

<http://www.siemens.com/industrial-controls/mall>

**Cax online generator:**

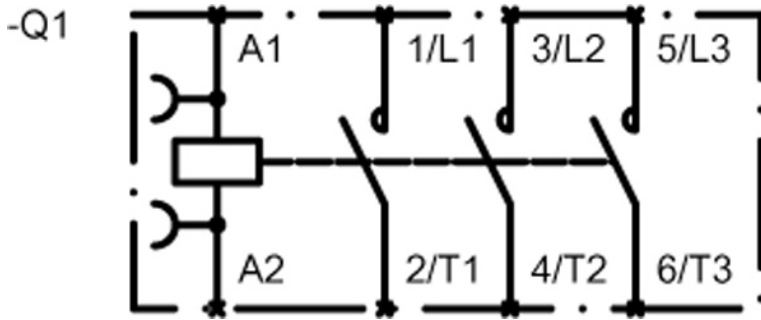
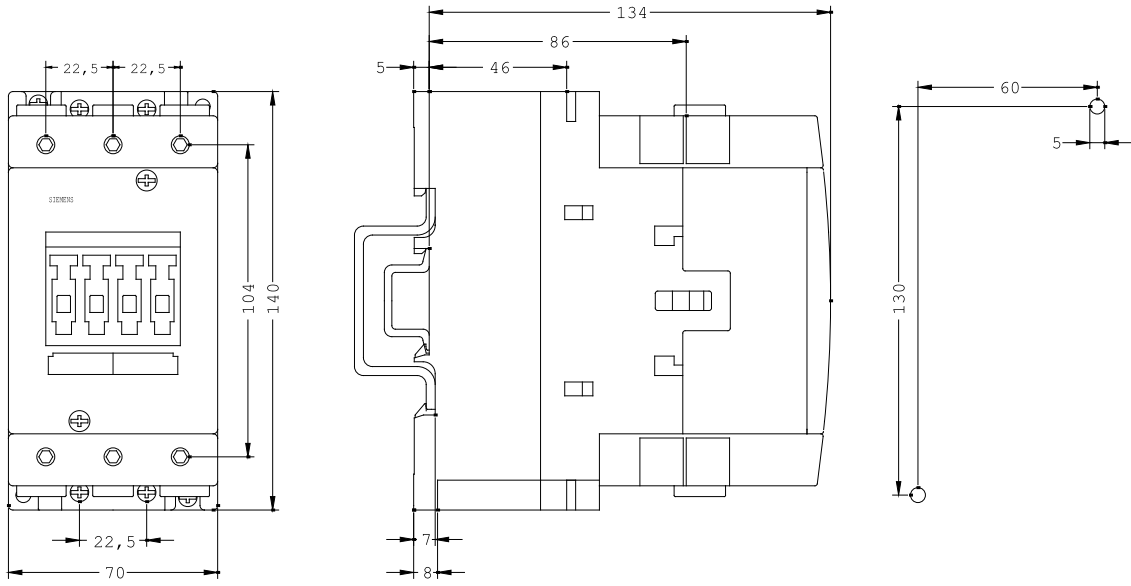
<http://www.siemens.com/cax>

**Service&Support (Manuals, Certificates, Characteristics, FAQs,...)**

<http://support.automation.siemens.com/WW/view/en/3RT1045-1AK60/all>

**Image database (product images, 2D dimension drawings, 3D models, device circuit diagrams, ...)**

[http://www.automation.siemens.com/bilddb/cax\\_en.aspx?mlfb=3RT1045-1AK60](http://www.automation.siemens.com/bilddb/cax_en.aspx?mlfb=3RT1045-1AK60)



last change:

Jul 13, 2012